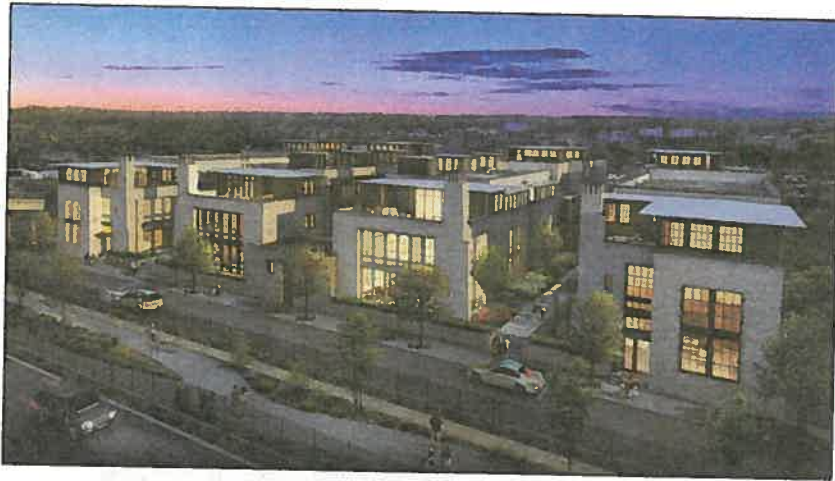


DEALS OF THE YEAR



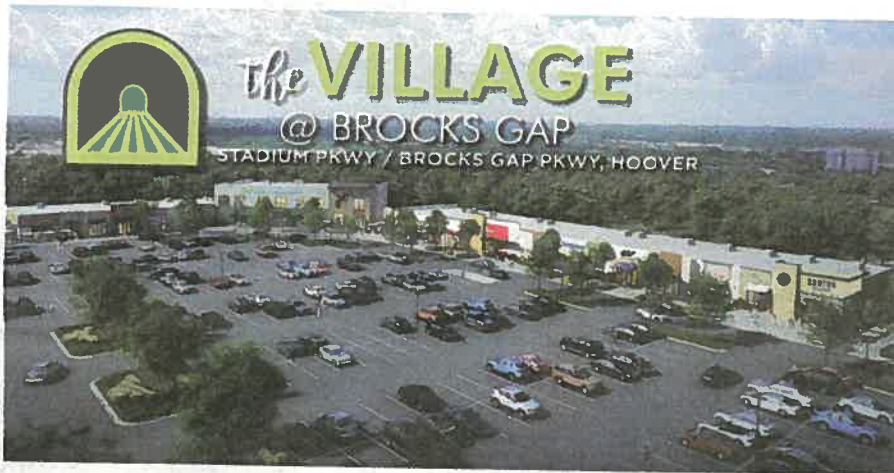
AVENUE A TOWNHOMES

The basics: Several heavy hitters from Birmingham's up to bring more residential options to the city with along Rotary Trail.

The players: H2 Real Estate, The Dobbins Group, Ne

Why it matters: The project is an example of how pr more real estate development. It also helps fill a large that can be purchased in the urban core.

Key fact: Avenue A will include 28 townhomes in two



THE VILLAGE AT BROCKS GAP is located in the Hoover Trace Crossings community adjacent to Hoover High School, Trace Crossings Elementary School, Bumpus Middle School and the Hoover Met while being surrounded by burgeoning neighborhoods with additional large residential developments in the planning stages. This premier location is ideal for a neighborhood retail/office center that has synergy with the community. It is designed much like those that serve Mt. Brook, Vestavia and Homewood presently and are extremely successful.



HIGHLIGHTS

- Premier location to Hoover's top neighborhoods, largest school system in Alabama in walking distance
- High demographic area that is underserved
- Across the street from the annual SEC Baseball tournament held at The Hoover Met as well as the nationally acclaimed Finley Center Sports and Banquet Complex
- Hoover Met Hosts Hoover High School football games and other athletic events. It is also home for the next 3 years to MLB Top East Coast Prospects sponsored by MLB.
- Multiple annual events held at The Hoover Met and large trade shows at The Finley Center such as the Annual Junior League Christmas Noel Event

FORLEASE
PRIME RETAIL / OFFICE SPACE



FORMOREINFORMATION

LOCAL FIRM. NATIONAL

LOOKING FOR
CRE DEAL
Don
OPPORTUNI
Pass



**THREE
POTENTIAL
BENEFITS OF
INVESTING
IN LOWER
INCOME AREAS:**

Defe
Up to
on or
Perm
for in

Contact **BMSS** to learn more ab
Opportunity Zones could take y

Bill Lorimer, CPA at 205.982.5519
or blorimer@bmss.com

Mark Underhill, CPA at 205.271.54
or munderhill@bmss.com



www.BMSS.com | (833)CPA-B